

# NP100

100 products in 18 months



INOX316



## TOWER Q1500

REF. 3049

### RECOMMENDED FOR URBAN ZONES AND DENSELY POPULATED AREAS

The new tower Q1500 allows us to reach the 14.5 m high with a completely new design made of stainless steel of high purity. The alloy INOX316 remove iron impurities, preventing oxidation and offering more long-term security with less maintenance.

The whole design of the tower, the structure and the anchors of the guy wires have relied on Navy technology. This new configuration allows us to install a tower at 14.5 m occupying only an area of 1.5 m radius. Save 401m<sup>2</sup> of yard to a conventional tower.

- Made of AISI 316 Stainless Naval. Ensures the structural characteristics of the tower along the time.
- Virtually unlimited duration
- Greater torsional strength and stiffness
- Easier handling and assembly
- New system of couplings that facilitate the connection between the sections
- Complete kit for installation, with all its accessories

#### REF DESCRIPTION

3049 KIT TOWER Q1500 STAINLESS STEEL 14,5M

#### EAN 13 CODE

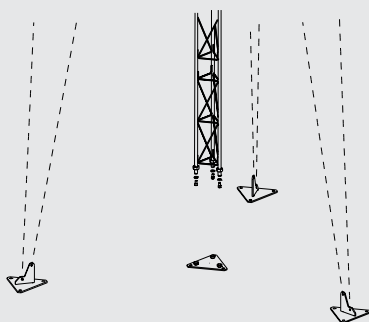
8424450142158

# TOWER Q1500

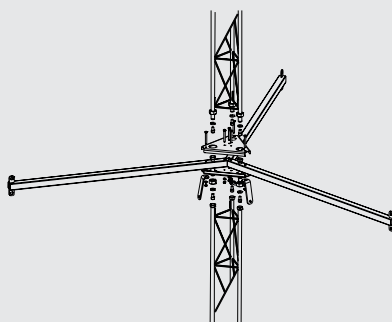
**MADE OF 316 STAINLESS STEEL**

**ALLOY THAT OFFERS ENHANCED SECURITY WITH LESS MAINTENANCE**

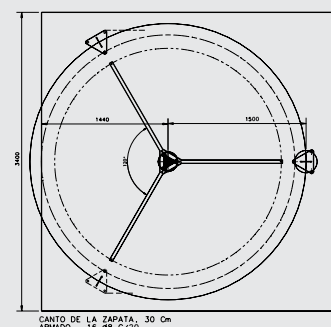
Base section + guy wires anchoring



Middle cross section



Dimensioning of the winds



## TECNICAL SPECIFICATIONS\*

- |                                        |         |
|----------------------------------------|---------|
| • Horizontal load on base              | 714N    |
| • Vertical load on base                | 20.000N |
| • Horizontal traction in the guy wires | 50N     |
| • Vertical traction in the guy wires   | 20.000N |

We recommend this application for:

- High-risk areas for people, such as: schools, hotels, urbanizations, and even single-family homes.
- Facilities with reduced dimensions.
- Areas of high salinity or industrial pollution.
- Avoid periodic maintenances.
- Special applications, etc.
- Antennas of AMATEUR RADIO.

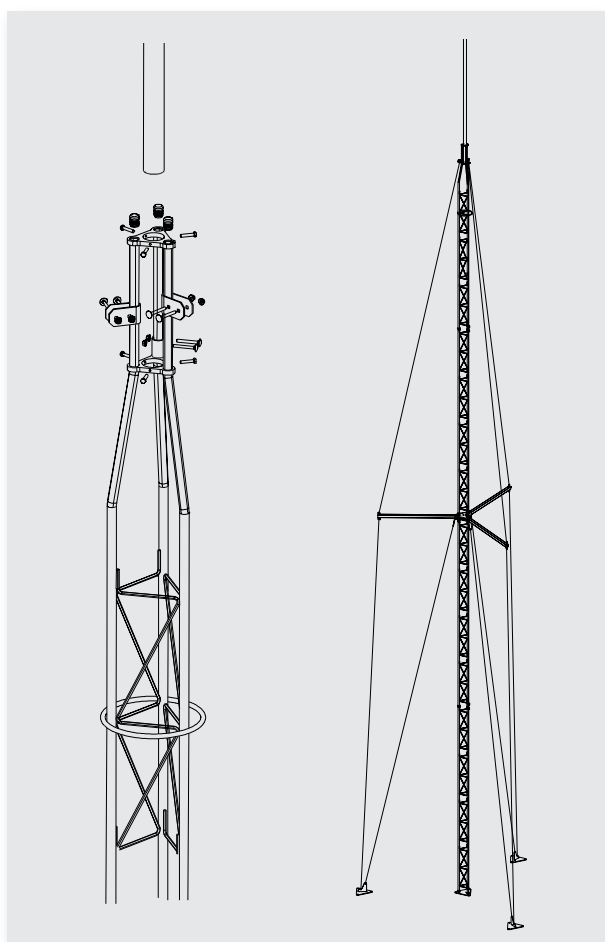
\*For the calculations of resistance, has been installed a DAT HD BOSS antenna on the mast and has been considered 130 Km/h as wind speed reference.

## KIT COMPOSITION

- 3 Middle sections 3m
- 1 Upper section 3m
- 1 Mast 3m
- 1 Crosshead guy wire anchoring
- 1 Tower base (Lower section)
- 3 Guy wire bases
- 3 Cables of Ø 4mm
- 6 Cables of Ø 5mm
- Turnbuckles, screws, brackets and accessories

Top Section

Tower's final configuration



*This reference gives us peace of mind to install without any accessories that might be forgotten*